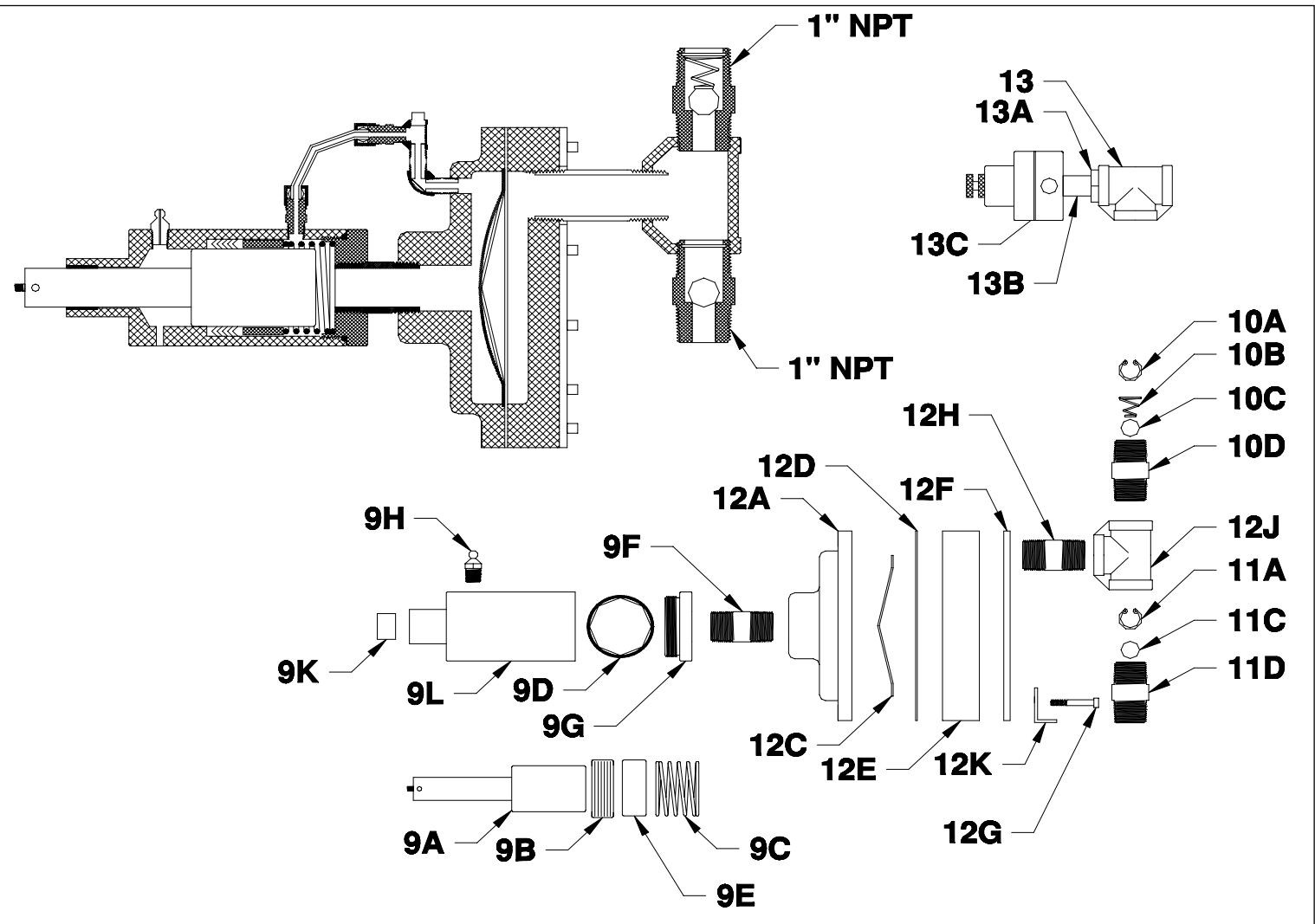


1 1/2" & 2" DIAPHRAGM HEAD PARTS



ITEM	PART #	DESCRIPTION
9	0100-7	1 1/2" POLYETHYLENE PUMP HEAD ASSEMBLY W/CHECKS***
	0100-8	2" POLYETHYLENE PUMP HEAD ASSEMBLY W/CHECKS***
9A	007-8	1 1/2" DIAMETER HYDRAULIC PISTON
	007-9	2" DIAMETER HYDRAULIC PISTON
9B	012-8	1 1/2" HYDRAULIC PACKING SET (BUNA N)
	012-9	2" HYDRAULIC PACKING SET (BUNA N)
9C	017-20	1 1/2" & 2" PACKING SPRING
9D	017-21	2 1/2" ID X 1/8" DIAMETER "O" RING SEAL
9E	018-1	1 1/2" PACKING SPACER
	018-2	2" PACKING SPACER
9F	002-13	1" NPT X CLOSE BLACK NIPPLE
9G	003-20	1 1/2" & 2" CARBON STEEL END CAP
9H	006-1	GREASE FITTING
9K	008-20	1 1/8" X 1" X 1" OILITE BUSHING
9L	001-20	1 1/2" & 2" PUMP HEAD SHELL
10*	002-22P-D	POLYETHYLENE DISCHARGE CHECK VALVE ASSEMBLY
	002-19-D	303SS DISCHARGE CHECK VALVE ASSEMBLY**
10A	16-SS	SS SNAP RING BALL RETAINER
10B	002-27	ANTI-SYPHON SPRING
10C	007-20	3/4" DIAMETER CERAMIC BALL CHECK
	002-17	3/4" DIAMETER 316SS BALL CHECK
10D	002-30	POLYETHYLENE CHECK VALVE BODY
	002-18	303SS CHECK VALVE BODY

* RECOMMENDED SPARE PARTS

ITEM	PART #	DESCRIPTION
11*	002-22P-S	POLYETHYLENE SUCTION CHECK VALVE ASSEMBLY
	002-19-S	303SS SUCTION CHECK VALVE ASSEMBLY**
11A	16-SS	SS SNAP RING BALL RETAINER
11C	007-20	3/4" DIAMETER CERAMIC BALL CHECK
	002-17	3/4" DIAMETER 316SS BALL CHECK
11D	002-30	POLYETHYLENE CHECK VALVE BODY
	002-18	303SS CHECK VALVE BODY
12A	001-H20	1 1/2" & 2" HYDRAULIC HEAD CASTING
12C	030-2H	SCREEN
12D	026-2H	1 1/2" & 2" HYDRAULIC HEAD TEFLON DIAPHRAGM
12E	025-H20	1 1/2" & 2" POLYETHYLENE HYDRAULIC HEAD (STANDARD)
	025-H20-S	1 1/2" & 2" 303SS HYDRAULIC HEAD
12F	029-H20	POLYETHYLENE PUMP HEAD CLAMP PLATE
12G	027-H20	HEAD BOLTS (12 REQUIRED)
12H	002-13-P	1" NPT X SHORT PVC NIPPLE
	002-13-S	1" NPT X SHORT 316SS NIPPLE
12J	002-12-P	1" NPT PVC TEE
	002-12-S	1" 316SS TEE
12K	031	HEAD SUPPORT LEG
13	002-12-P	1" NPT PVC TEE
13A		1/2" NPT X 1" NPT PVC BUSHING
13B		1/2" NPT X 1 1/2" PVC NIPPLE
13C	36P	1/2" NPT POLYETHYLENE PRESSURE RELIEF VALVE

OPTIONAL MATERIALS

- ** 316SS
- *** 303SS
- *** 316SS