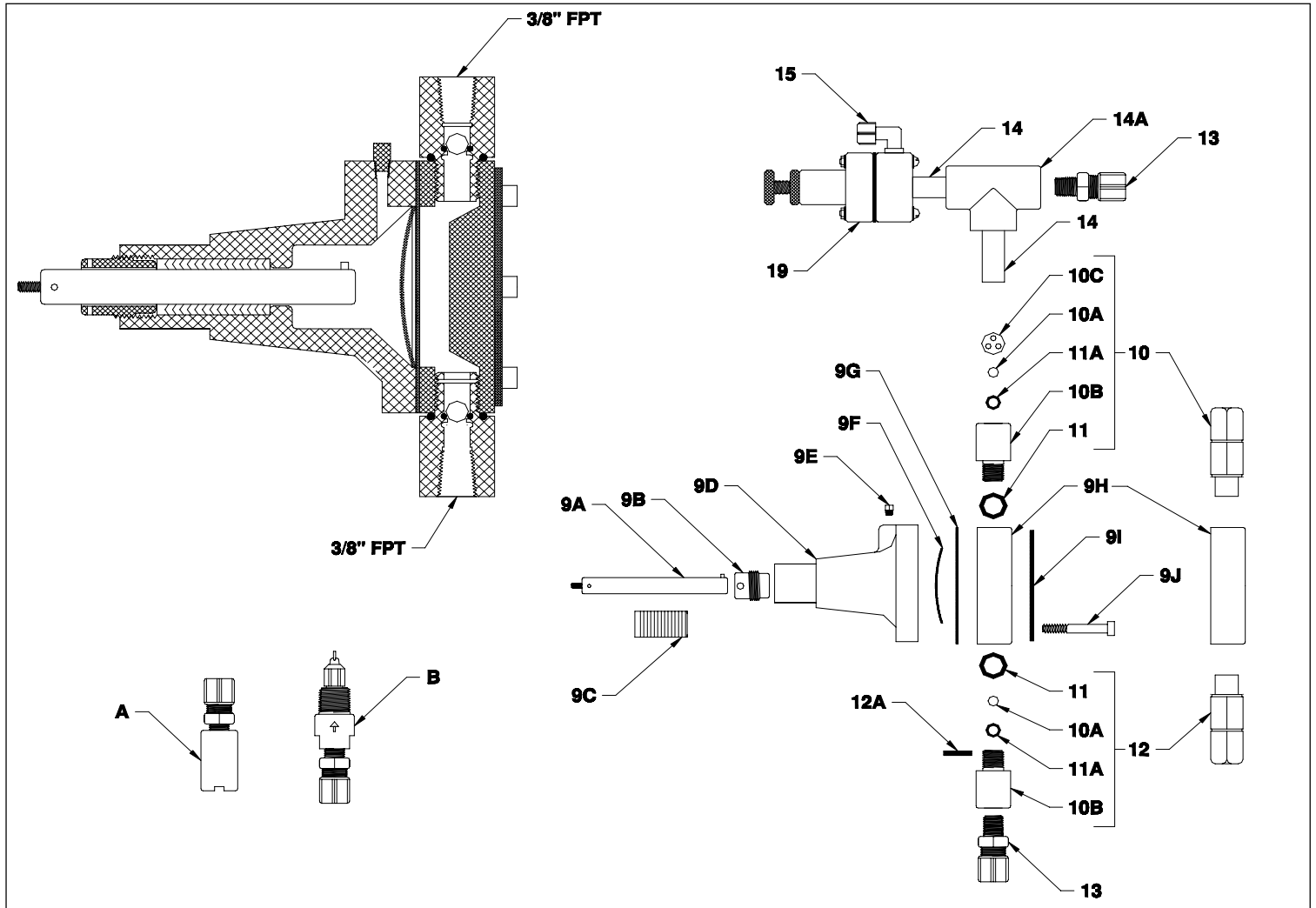


5/8" DIAPHRAGM HEAD PARTS



ITEM	PART #	DESCRIPTION
9	0100-5	5/8" POLYETHYLENE PUMP HEAD ASSEMBLY W/CHECKS**
9A	007-H	5/8" DIAMETER 303SS HYDRAULIC PISTON
9B	003-6	5/8" PACKING NUT
9C	012-H	5/8" HYDRAULIC PACKING SET (BUNA N)
9D	001-H	5/8" HYDRAULIC PUMP HEAD SHELL
9E	0006-2	1/8" PIPE PLUG
9F	030-H	5/8" & 1" HYDRAULIC PUMP HEAD SCREEN
9G*	026-H-2	5/8" & 1" HYDRAULIC PUMP HEAD TEFLON DIAPHRAGM (STANDARD)
	026-H-1	5/8" & 1" HYDRAULIC PUMP HEAD VITON DIAPHRAGM
	026-H-3	5/8" & 1" HYDRAULIC PUMP HEAD NEOPRENE DIAPHRAGM
9H	025-H-1	5/8" & 1" POLYETHYLENE PUMP HEAD (STANDARD)
	025-H-2	5/8" & 1" 303SS HYDRAULIC PUMP HEAD
	025-H-3	5/8" & 1" PVC HYDRAULIC PUMP HEAD
	025-H-4	5/8" & 1" 316SS HYDRAULIC PUMP HEAD
	025-H-5	5/8" & 1" ALLOY 20 HYDRAULIC PUMP HEAD
9I	029-H	CLAMP PLATE FOR POLYETHYLENE & PVC HEADS
9J	027-H	HYDRAULIC PUMP HEAD BOLTS (6 REQ)

*** RECOMMENDED SPARE PARTS**

ITEM	PART #	DESCRIPTION
10*	002-DH	POLYETHYLENE DISCHARGE CHECK VALVE ASSEMBLY
	002-D	303SS DISCHARGE CHECK VALVE ASSEMBLY
10A	002-9	3/8" DIAMETER CERAMIC BALL CHECK
10B	002-1H	POLYETHYLENE CHECK VALVE BODY
10C	002-7H	BALL RETAINER DISC
11	028-H	3/4" X 1/8" CROSS SECTION VITON "O" RING SEAL
11A	028-S	VITON "O" RING SEAT
12*	002-SH	POLYETHYLENE SUCTION CHECK VALVE ASSEMBLY
	002-S	303SS SUCTION CHECK VALVE ASSEMBLY
12A	002-8H	BALL RETAINER PIN
13	38-38	3/8" NPT X 3/8" OD TUBE FITTING
14	050-P-38	3/8" NPT X 2" PVC NIPPLE
14A	050-P-16	3/8" NPT PVC TEE
15	14-14-90	1/4" NPT X 1/4" OD TUBE ELBOW FITTING
19	19	3/8" NPT POLYETHYLENE PRESSURE RELIEF VALVE
A	9	1/4" NPT POLYETHYLENE FOOT VALVE
B	8	1/2" NPT POLYETHYLENE INJECTION NOZZLE

OPTIONAL MATERIALS

- ** 303SS
- 316SS
- C20