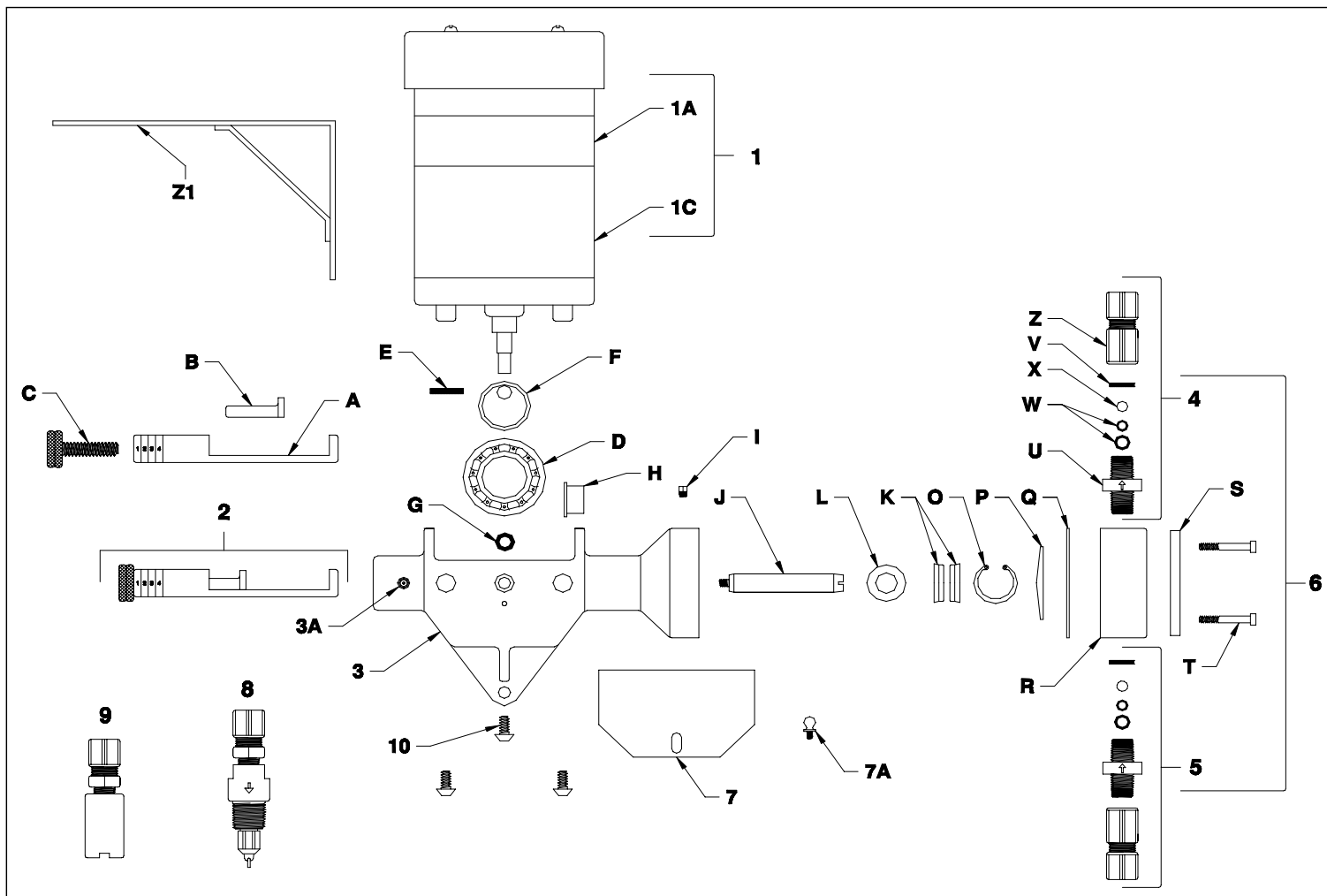


V-6 PUMP PARTS



ITEM	PART #	DESCRIPTION
1	VW-2	120 VAC 1PH 1/20TH HP 2 RPM GEARMOTOR
	VW-6	120 VAC 1PH 1/20TH HP 6 RPM GEARMOTOR
	VW-12	120 VAC 1PH 1/20TH HP 12 RPM GEARMOTOR
	VW-30	120 VAC 1PH 1/20TH HP 30 RPM GEARMOTOR
	VW-60	120 VAC 1PH 1/20TH HP 60 RPM GEARMOTOR
1A	6K151	REPLACEMENT MOTOR ONLY (SPECIFY GEAR HEAD RPM)
1C	1C-2	2 RPM GEAR HEAD ASSEMBLY
	1C-6	6 RPM GEAR HEAD ASSEMBLY
	1C-12	12 RPM GEAR HEAD ASSEMBLY
	1C-30	30 RPM GEAR HEAD ASSEMBLY
	1C-60	60 RPM GEAR HEAD ASSEMBLY
2	097	SLIDE ARM ASSEMBLY
3	08	V-6 PUMP CASTING
3A	006-2	SLIDE GREASE FITTING
4*	02DH	POLYETHYLENE DISCHARGE CHECK VALVE ASSEMBLY
	02D-S	303SS DISCHARGE CHECK VALVE ASSEMBLY
5*	02SH	POLYETHYLENE SUCTION CHECK VALVE ASSEMBLY
	02S-S	303SS SUCTION CHECK VALVE ASSEMBLY
6	1025	POLYETHYLENE PUMP HEAD ASSEMBLY
	1025 SS	303SS PUMP HEAD ASSEMBLY
7	102	PLASTIC COVER
	102 GC	SS GASKETED COVER
7A	1102-1	COVER SCREW
8	8	POLYETHYLENE INJECTION NOZZLE
9	9	POLYETHYLENE FOOT VALVE
10	08-4	1/4-20 BUTTON HEAD SCREW (3 REQUIRED)

ITEM	PART #	DESCRIPTION
A	090	SLIDE
B	098	SLIDE PIN
C	099	STROKE ADJUSTMENT SCREW & LOCKNUT
D	3L06	DRIVE BEARING
E	101-1	1/8" X 1" ROLLED PIN
F	101	DRIVE BEARING SUPPORT CAM
G	312	OILITE SUPPORT BUSHING
H	500	OILITE PISTON BUSHING
I	0006-2	1/8" NPT OIL RESERVOIR PIPE PLUG
J	07	V-6 HARDENED STEEL PISTON
K	12	V-6 PACKING SET
L	13	PACKING RETAINER WASHER
O	16	SNAP RING
P	30	V-6 DIAPHRAGM SCREEN
Q*	26	TEFLON DIAPHRAGM
R	25	POLYETHYLENE HEAD
	25 SS	303SS HEAD
	25 S6	316SS HEAD
S	29	CLAMP PLATE FOR POLYETHYLENE HEAD
T	27	PUMP HEAD BOLT (4 REQUIRED)
U	02	POLYETHYLENE CHECK VALVE BODY
V	02-8	BALL CHECK RETAINING PIN
W	28	VITON "O" RING SEAT
X	002-9	3/8" DIAMETER CERAMIC BALL CHECK
Z	50-9	3/8" NPT X 3/8" OD POLY TUBING FITTING
	50-9 SS	3/8" NPT X 3/8" OD 316SS TUBING FITTING
Z1	Z1	MINI-PUMP WALL BRACKET

* RECOMMENDED SPARE PARTS